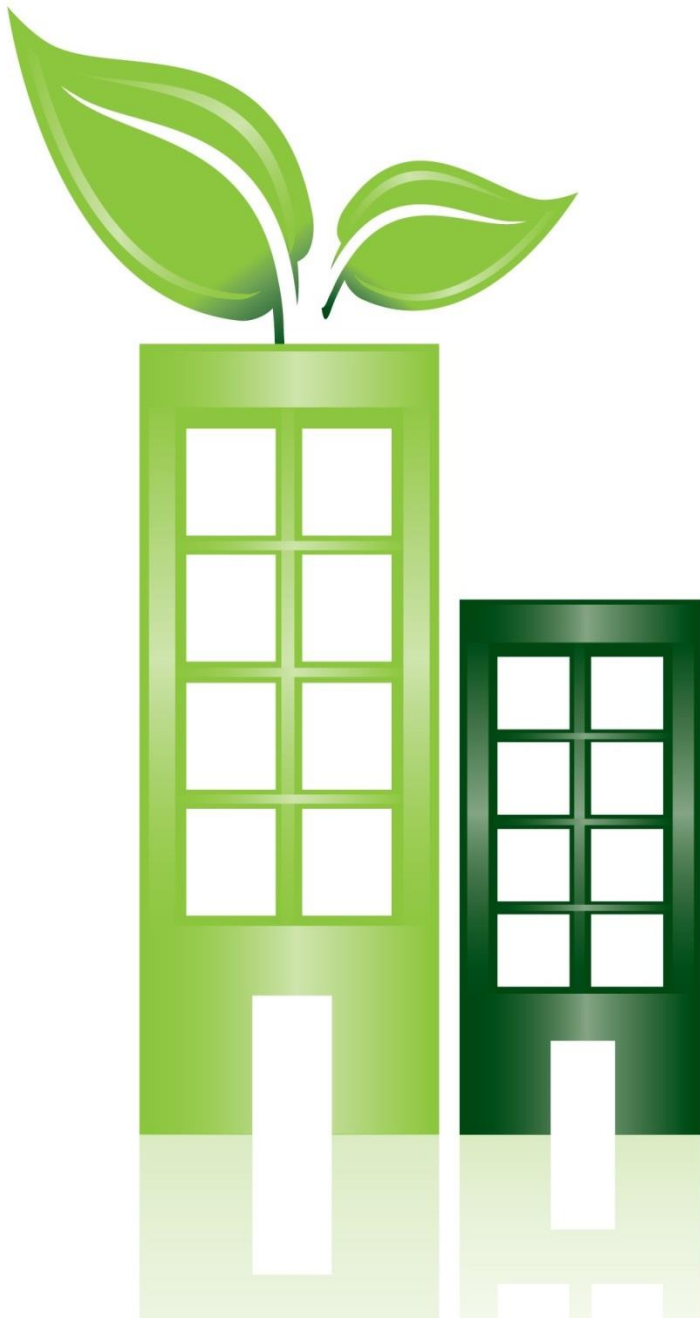


N'ALA HOTEL SAKARYA

Sustainability Report



2023-2024



CONTENT

- 1. About the Report*
- 2. Facility Introduction and Facility Features*
- 3. Our Sustainability Team*
- 4. Mitigating Environmental Impacts*
- 5. Environmental Sustainability*
- 6. Personnel and Working Life*
- 7. Social Activities*
- 8. Cultural Studies*



1. ABOUT THE REPORT

As N'Ala Hotel Sakarya; we have started our sustainability studies as of 2023-2024. We aim to share the development we have realized in this direction with our management, employees, guests, suppliers and all other partners, and thus increase the awareness we will create at this point and turn it into common goals and achievements.

This sustainability report includes data for the 2023-2024 period.

Sustainable tourism aims to contribute to the local economy, the protection of natural and cultural heritage, and the improvement of the quality of life of local people and visitors by minimizing the negative impacts of tourism on both society and the environment.

Based on this approach, our hotel in Sakarya aims to not only meet the needs of people today, but also to protect and sustain today's resources in order to meet the needs of future generations.



Our commitment to sustainability is not just a corporate responsibility, it is a core value that defines our identity. We are aware of the huge impact of the hotel industry on the environment, society and the economy. Therefore, we are committed to implementing practices that reduce our carbon footprint and make positive contributions to the environment. This report reflects our commitment to building a more sustainable future.

2. N'ALA HOTEL SAKARYA FACILITY FEATURES AND INTRODUCTION

N'ALA HOTEL SAKARYA, one of the important investments of our city, was realized with one hundred percent Turkish capital. The architectural structure of our hotel has been designed very carefully in order to ensure that our guests can stay in the most comfortable way. Our friendly service understanding that prioritizes hygiene, safety, quality and comfort is crowned with our delicious and varied restaurant and cafe services, meeting and invitation hall organizations.



- 49 special rooms with different concepts (terrace rooms with balcony, garden rooms with detached entrance, family rooms, standard rooms and suites),
- Lobby-reception welcome and waiting area,
- Ala Restaurant,
- Ala Cafe,
- Meeting and reception hall

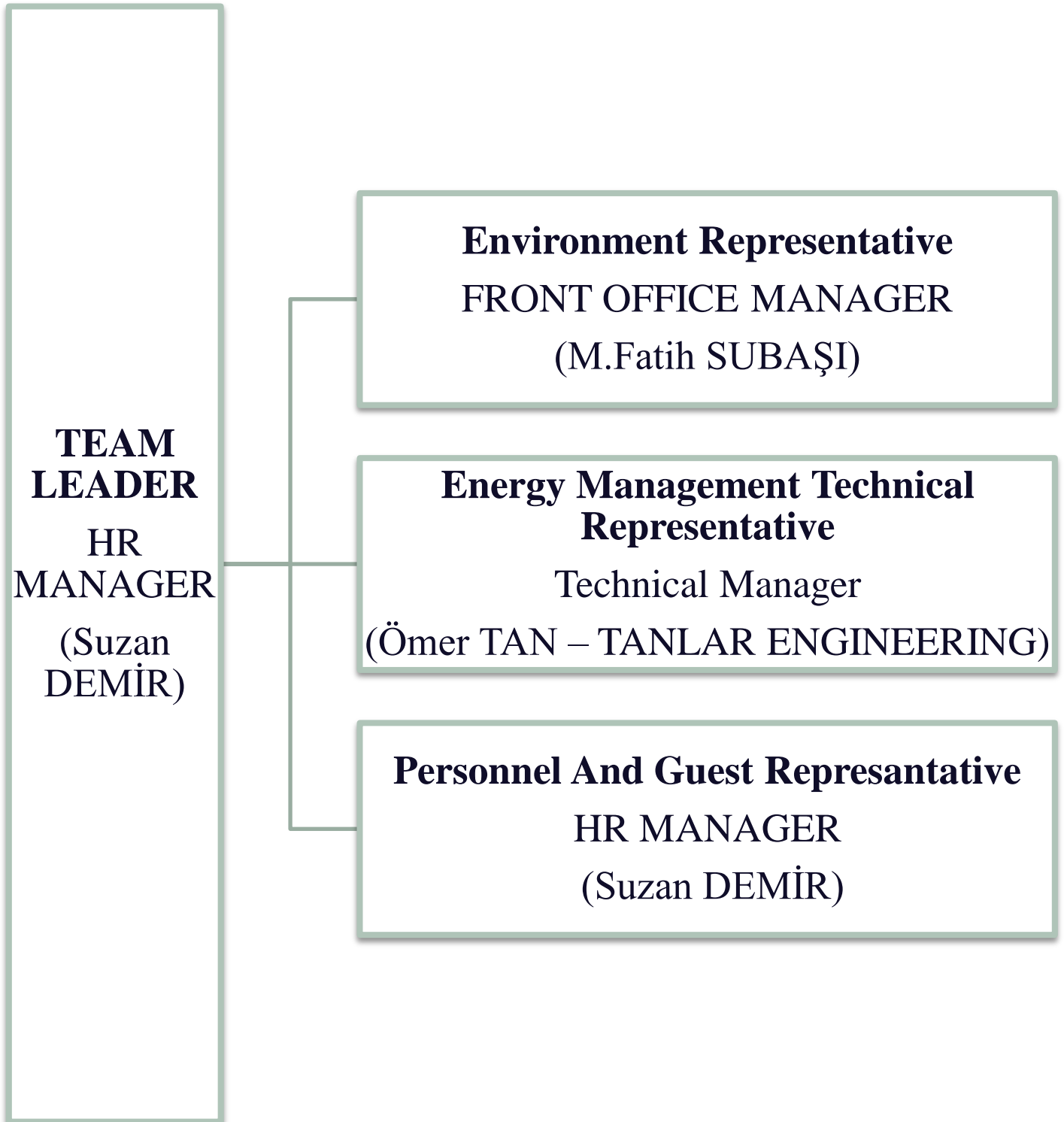
It has been a very special project with its detached parking lot.

Our hotel, which started its service in February 2019, attracts attention with its special location in the center of the city. It is adjacent to Sakarya University Medical Faculty Training and Research Hospital. Located in the city center, our hotel is 5 mins from Sakarya Intercity Bus Terminal and 10 mins from Arifiye Train Station. Minibuses, buses and taxis departing from right in front of our hotel provide transportation to every destination of the city in a short time.



Our hotel, which has been carefully designed for the comfort and peace of our guests coming to our city, is a privileged facility with its high equipment, friendly staff and facilities. N'Ala Hotel Sakarya Family is at your service with the rightful pride of being able to offer you the comfort of your home in a clean and warm environment with satisfaction guarantee.

3. *Our Sustainability Staff*



3. MITIGATING ENVIRONMENTAL IMPACTS

Regarding Water Saving;.

- In order to limit our energy and water use, we change the bed linen of our guests every 2 days.
- We do not change used towels unless our guests request it.
- We reduce the cistern water level setting by 25% in all toilet bowls in our hotel, saving a significant amount of waste water for each toilet bowl.
- We train our staff to recognize and prevent water leaks from room toilets.
- We reduce the frequency of laundry washing and save a significant amount of water and electricity by collecting our laundry and giving it to our laundry company in one go. We also reduce the frequency of delivery vehicles arriving at the hotel, reducing our carbon emissions

Regarding Waste;

- Oils used in food preparation and then separated as waste are delivered to the authorized company as waste oil.
- Organic wastes generated during food and beverage preparation in the kitchen are separated and weighed and delivered to the authorized company.
- We placed waste sorting bins in certain areas of the hotel.
- We have placed waste sorting boxes in our rooms to ensure the separation of waste and to get the support of guests in this regard.
- In order to minimize package waste, we meet with suppliers and send their possible packaging back to them and ensure that they are reused for consumption.
- On a daily basis, the garbage from the departments is separated and left in the recycling waste area at the back of the hotel.
- We held meetings with our suppliers to remove the unnecessary outer containers of the boucle products we use.

Regarding Energy Saving;

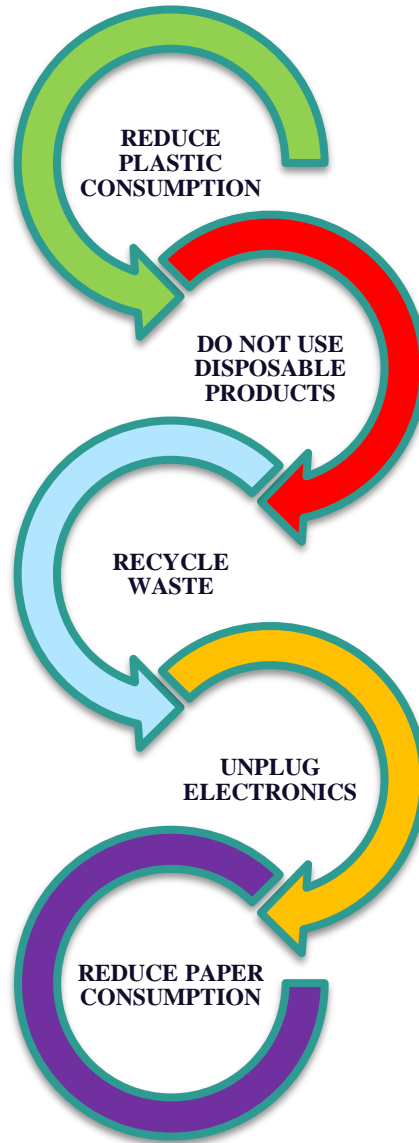
- All mechanical equipment in our hotel is equipped with control systems such as pressure and temperature sensors and temperature mixing valves to operate efficiently and save energy.
- All automation systems in our hotel, especially lighting and air conditioning systems, work to reduce CO2 emissions.
- Sensor lighting system is used in the common area toilets in our hotel.
- Sensor lighting system is used in all floor corridors and staff common areas in our hotel.
- All office areas are equipped with LED lamps.
- All rooms are equipped with systems that disable heating/cooling devices in case the window is opened.
- In order to save energy and reduce the amount of hazardous waste in all rooms and general areas of our hotel, energy-saving lighting or LED lighting is used instead of incandescent bulbs.
- Many areas in the hotel are designed to reduce energy consumption by utilizing daylight.
- The energy in our rooms is activated by the card system. Thus, the energy system is deactivated when the guest is not in the room.
- All electrical devices are maintained and cleaned at certain intervals to prevent possible energy losses.
- We use Solar Energy System in our hotel.

4. ENVIRONMENTAL SUSTAINABILITY

The term means using natural resources without degrading the natural environment and considering the needs of future generations. This principle aims to use natural resources efficiently, protect natural life, increase biodiversity and minimize environmental pollution. If environmental sustainability cannot be ensured, it is unlikely that our world will be able to continue its healthy existence for a long time.

Plastics come first among the substances that harm nature the most. Because plastics do not disappear in nature for many years, which is the main cause of nature pollution. You can make it more sustainable by reducing the use of plastic, for example, you can turn to reusable alternatives instead of plastic disposable bags, bottles, cups, straws.

Sürdürülebilir yaşam için yapabileceğiniz en basit şeylerden biri, materyali Her ne olursa olsun tek kullanımlık ürünlerden kaçınmaktır. Çünkü bu ürünler, çok fazla atık çıkarır ve bazılarının doğada çözülmesi uzun yıllar alır bu da toprağa, havaya, suya epey zarar verir. Özellikle ürün satın alırken birden fazla kez kullanılabilir olmasına ve atık haline geldiğinde doğada hızlı çözünebilir olduğuna dikkat etmelisiniz.



One of the simplest things you can do for sustainable living is to avoid disposable products, whatever the material. Because these products produce a lot of waste and some of them take many years to decompose in nature, which causes a lot of damage to the soil, air and water. Especially when buying a product, you should pay attention to the fact that it can be used more than once and that it is biodegradable when it becomes waste.

Product reuse is crucial for sustainability. Today, products often end up in landfills even though they have not yet reached the end of their useful life. You can use products made with recyclable materials. You can also protect the nature by recycling your items that have fulfilled their primary purpose and lifespan by continuing to use them in other areas.

From communication to shopping, from banking to official affairs, you can now meet your needs in digital environment. Therefore, there is no need to use paper because trees must be cut down to produce paper. While the methods used during this production harm the nature in itself, it also prevents the trees from protecting and sustaining nature, and the return of these papers to nature as garbage creates a serious problem in terms of environmental pollution.

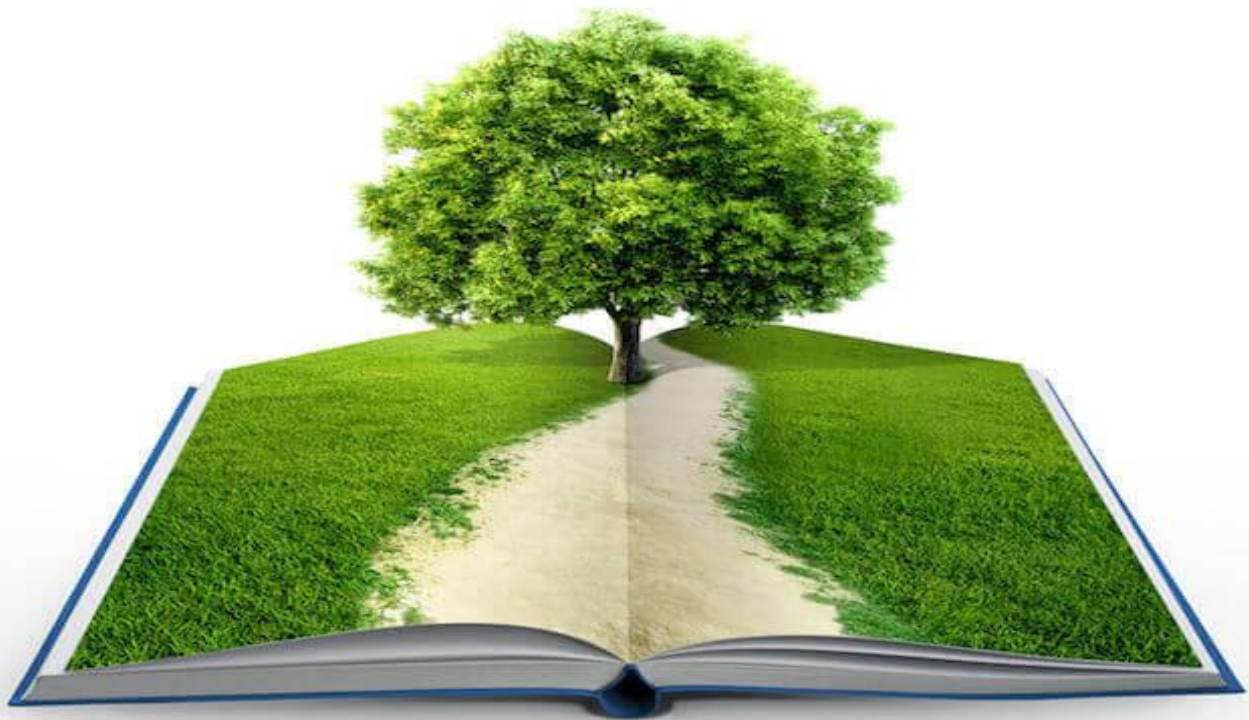
PERSONNEL AND WORKING LIFE

At our hotel, employees are included in the Orientation Training program as soon as they start work and are informed about the history of the hotel, the rules within the facility, our expectations from employees, our environmental activities, our policies and quality management systems. Within the framework of our continuous training and development approach, our employees are provided with Personal Development Trainings as well as Professional Development Trainings.

We provide social aid to our valuable employees. We organize training programs and activities to improve the skills and performance of our employees.

We organized Environmental Trainings (Sustainability Awareness Training, Zero Waste, Food Waste Prevention) and Health and Safety Trainings (Hygiene Training, Covid-19 Pandemic Management).

Our mission to make the employee experience safe and enjoyable at all times plays an crucial role in the long-term continuity of the team.



5. *Social Activities*

Social sustainability aims to improve people's quality of life and well-being, ensure equity and justice, and promote an inclusive environment in society. This includes meeting basic human needs such as education, health care, housing, gender equality, protecting cultural diversity and securing labor rights. Social sustainability requires the participation and empowerment of all segments of society so that the quality of life of all can be improved. Meeting the needs of society means taking into account the needs of all, ensuring social justice and respecting human rights. This principle aims to increase social well-being, reduce poverty, promote education and health, protect cultural diversity and improve people's quality of life.

As N'Ala Hotel, we aim to promote social sustainability through our sustainability activities. We care very much about creating a positive impact on the society we live in.

- The vast majority of our employees are from Sakarya.
- We support the local community and prefer local products first for our purchases.
- We embrace the cultural heritage of Sakarya and encourage our guests to engage in cultural activities.
- We act cautiously and take the necessary precautions to protect against health and safety risks.
- We comply with our responsibilities to prevent work accidents.



As Sakarya N'ala Hotel, we are aware that social and cultural sustainability is only possible with adequate realization of health, education, gender equality, cultural responsibility and incentives. We aim for our practices in this regard to contribute positively to the social and cultural structure of the region.

6. CULTURAL ACTIVITIES

Sakarya can be defined as a city at the crossroads of Turkey with its history, culture and natural beauties. Located on the historical Silk Road and connecting east and west for centuries, the city has been a transit point.

Sakarya has hosted different cultures such as the Hittites, Lydians, Bithynian Kingdom, Roman Empire and Ottoman Empire throughout history. Sakarya, which became a district with the establishment of the Republic of Turkey in 1923, became a province in 1954. In 2000, Sakarya became a metropolitan city and today its population has exceeded 1 million. Its convenient location in terms of transportation in the east of the Marmara Region attracts attention with its economic and social structure.

Due to the large population of Sakarya University, the city has a dense young population. Café Street in the city center, Çark Street, the heart of Sakarya, Historical Long Bazaar, Sapanca and Kırkpınar with their natural beauties, Agora Shopping Mall, Serdivan Shopping Mall, and Bağlar Street, the symbol of Serdivan, are among the indispensable meeting places for young people.

Sakarya is also known as a 'Water City'. Sapanca Lake, one of the world's most important drinking water sources, is Sakarya's main source of drinking water. The "Blue Flag" award-winning Karasu Beach attracts many visitors in summer due to sea tourism.



Sakarya cuisine is like a multicultural festival. As a result of migrations from the Balkans and Anatolia, different cuisines meet in Sakarya. Islama meatballs, pumpkin soup and pumpkin dessert, yogurt doner, Circassian chicken, foam halva and keskek are just a few of them. Pumpkin dessert, which has become a flavor symbol of the city in recent years, is a flavor that is frequently mentioned. Tunatan also contributes to the promotion of the city with its pumpkin products.



Sakarya can be defined as a city at the crossroads of Turkey with its history, culture and natural beauties. Located on the historical Silk Road and connecting east and west for centuries, the city has been a transit point. Sakarya has hosted different cultures such as the Hittites, Lydians, Bithynian Kingdom, Roman Empire and Ottoman Empire throughout history.

The city, which became a district with the establishment of the Republic of Turkey in 1923, became a province in 1954. In 2000, Sakarya became a metropolitan city and today its population has exceeded 1 million. Its convenient location in terms of transportation in the east of the Marmara Region attracts attention with its economic and social structure.